

CITY OF NOLANVILLE, TEXAS

THE PLAZA WASTEWATER IMPROVEMENTS – PHASE III

ADDENDUM NO. 2

January 31, 2023

The construction plans and specifications for the Plaza Wastewater Improvement Project – Phase III on which bids are to be received until 2:00 p.m. on Thursday, February 9, 2023, are hereby modified as follows:

I. General

- A. Roadways where construction is taking place will be allowed to be closed to thru traffic during normal working hours. These same roadways will be required to be opened to all traffic prior to the Contractor leaving the job site each day.
- B. The successful bidder will be required to apply for a plumbing permit thru the City of Nolanville, but all fees will be waived. The contractor is not required to have a licensed plumber install the yard line and clean out to the house. The City will inspect the installation to verify it meets required plumbing codes during installation.

II. Refer to the Construction Plans:

A. Plaza WW Connection Exhibit

Please find the attached Plaza WW Connection Exhibit. This Exhibit reflects the connections to the main line should Base Bid or Base Bid plus Add Alternate A and Add Alternate B would be awarded. Bid item modifications, such as removal of end of line cleanout, added manhole, add wastewater line will be included in the revised bid form to be issued with the final addendum.

B. Plan/Profile Sheets

Replace the plan/profile sheets (P-01 thru P-10) in the plans with the attached Revised Plan Sheets_Mesquite Trunk Realignment. This reflects the adjusted alignment of the wastewater line running down mesquite to outside the pavement section. Bid item modifications, such as curb repair and reduction of asphalt pavement repair will be included in the revised bid form to be issued with the final addendum.

III. Receipt of Addendum

Bidders shall acknowledge receipt of this Addendum in the space provided on the Bid Form and on the outer envelope of each sealed bid.



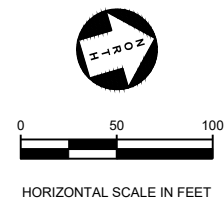
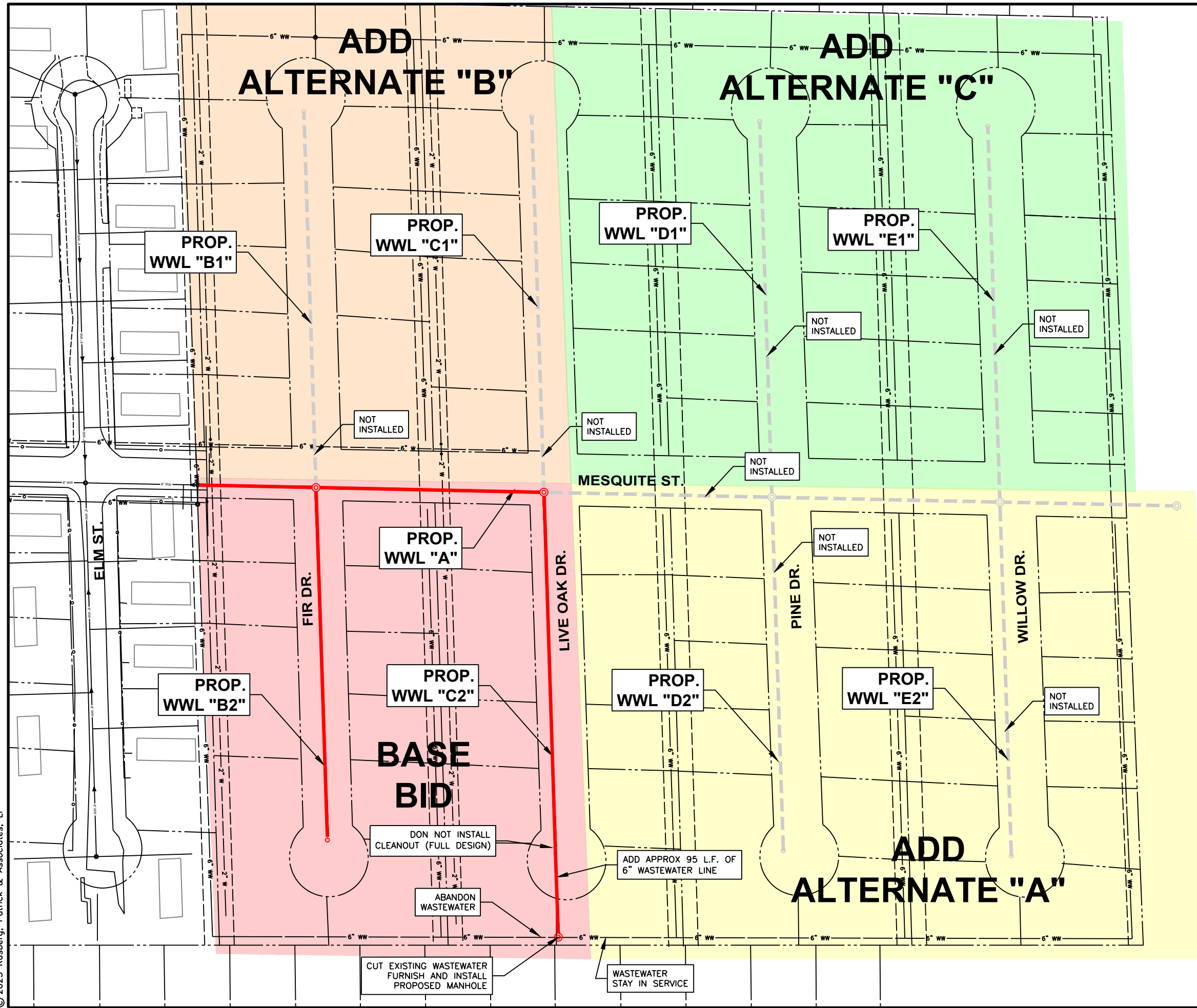
Alvin R. Sutton III (Trae), P.E.
Kasberg, Patrick & Associates, LP
19 North Main
Temple, Texas 76501

1-31-23

Date



P:\nolanville\2022\22-114 The Plaza WW Rehab - PH III\CAD\GENERAL NOTES\PHASE SHEET ALTERNATIVE.dwg
© 2023 Kasberg, Patrick & Associates, LP



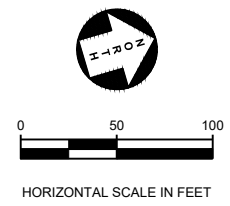
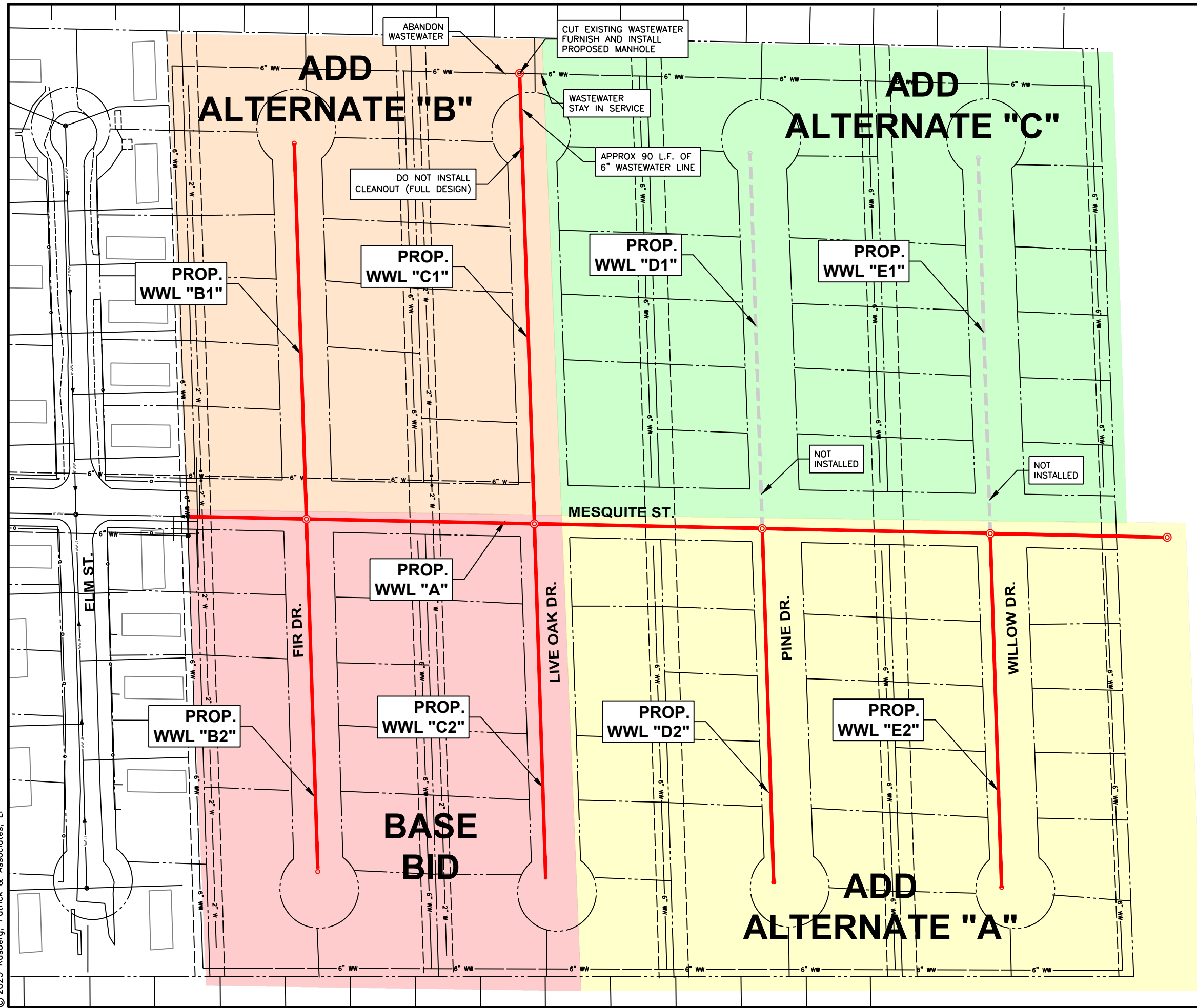
--- FULL PROJECT DESIGN
--- ADD ALTERNATE OPTION

CITY OF NOLANVILLE, TEXAS
PLAZA WASTEWATER IMPROV. PHASE III
BASE BID ONLY

KPA KASBERG, PATRICK & ASSOCIATES, LP
CONSULTING ENGINEERS
TEMPLE, TEXAS 76501
Firm Registration No. F-510

JANUARY 2023 EXHIBIT A

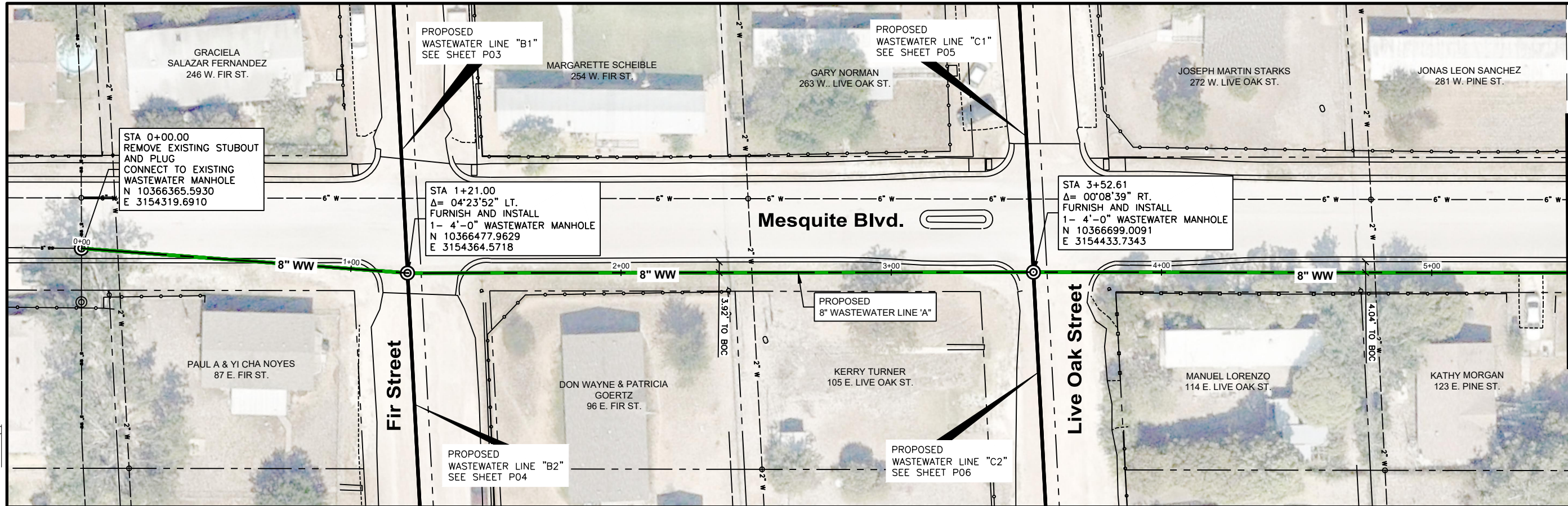
P:\nolanville\2022\22-114 The Plaza WW Rehab - PH III\CAD\GENERAL NOTES\PHASE SHEET ALTERNATIVE.dwg
© 2023 Kasberg, Patrick & Associates, LP



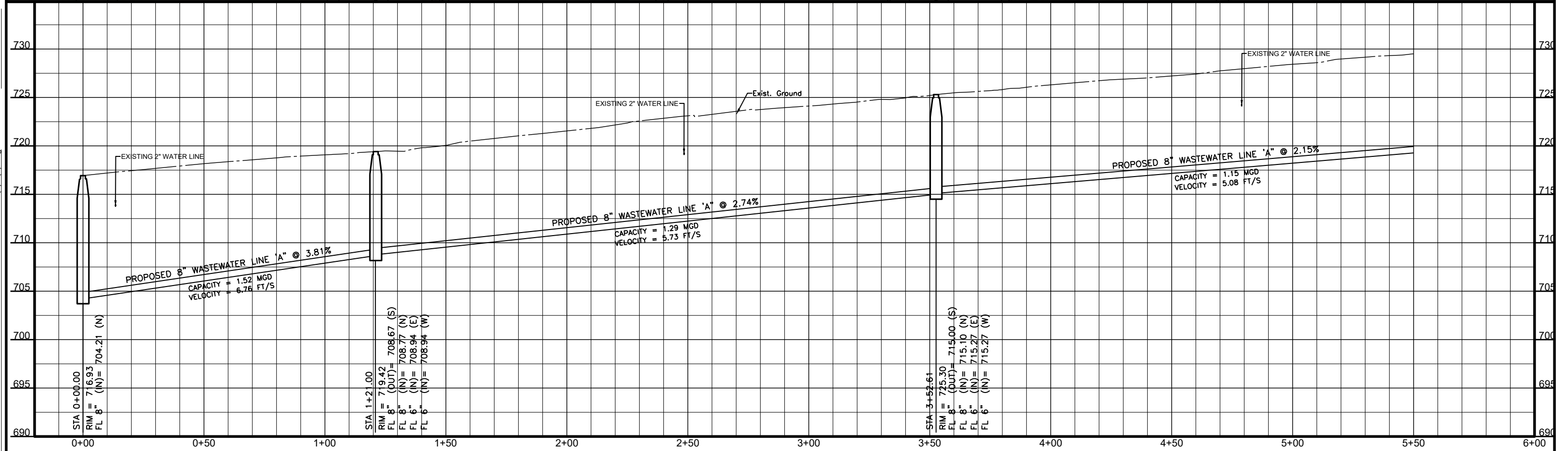
--- FULL PROJECT DESIGN
--- ADD ALTERNATE OPTION

| | |
|---|-----------|
| CITY OF NOLANVILLE, TEXAS | |
| PLAZA WASTEWATER IMPROV. PHASE III BASE BID, ADD ALT A & B | |
|  KASBERG, PATRICK & ASSOCIATES, LP CONSULTING ENGINEERS TEMPLE, TEXAS 76501 Firm Registration No. F-510 | |
| JANUARY 2023 | EXHIBIT B |

FILE: P:\nolanville\2022\22-114 The Plaza WW Rehab - PH III\CAD\BASE\WVG - WW LINE A - (4) - (2).dwg LAST SAVED: 7/30/2023 4:08:01 PM LAYOUT: Sheet - (3)



MATCH LINE STATION 5+50



| NO. | DATE | REVISION | BY |
|-----|------|----------|----|
| | | | |

© 2023 Kasberg, Patrick & Associates, LP
KPA Firm Registration Number F-510

| | |
|-------------|---------------------------|
| PROJECT NO. | 2022-114 |
| DRAWN BY | Brian Baker |
| DESIGNED BY | Alvin R. Sutton III, P.E. |
| APPROVED BY | <i>[Signature]</i> |
| DATE | 1-30-23 |

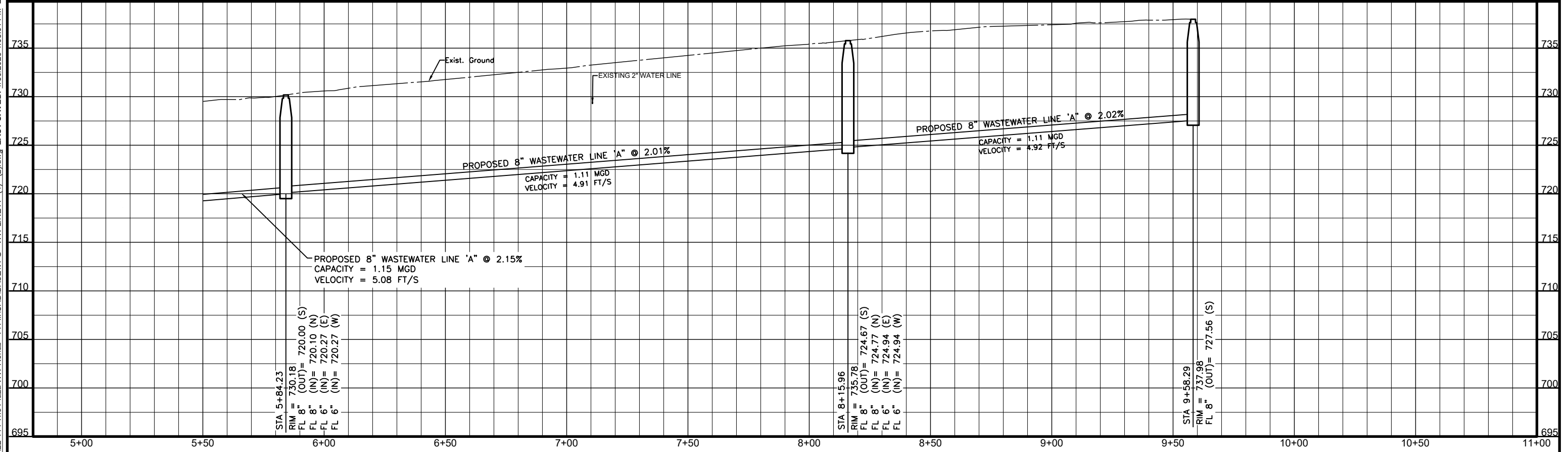
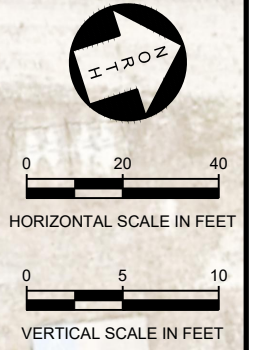
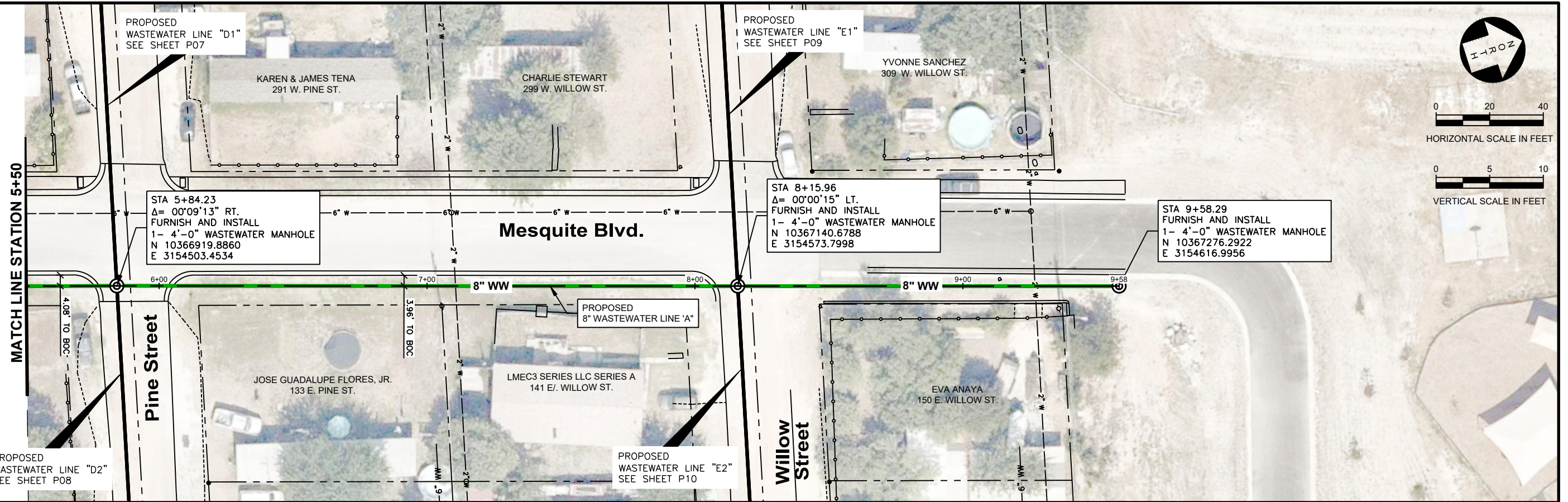


KASBERG, PATRICK & ASSOCIATES, LP
CONSULTING ENGINEERS
TEMPLE, TEXAS 76501

CITY OF NOLANVILLE, TEXAS
THE PLAZA WASTEWATER IMPROVEMENTS, PHASE III
PLAN AND PROFILE
WASTEWATER LINE A - STA. 0+00 TO STA. 5+50

SHEET NO.
P01 OF
10 SHEETS

FILE: P:\nolanville\2022\22-114 The Plaza WW Rehab - PH III\CAD\BASE\VEFG - WW LINE A - (4) - (2).dwg LAST SAVED: 1/30/2023 4:08:01 PM LAYOUT: Sheet - (4)



| NO. | DATE | REVISION | BY |
|-----|------|----------|----|
| | | | |

©2023 Kasberg, Patrick & Associates, LP
KPA Firm Registration Number F-510

PROJECT NO. 2022-114
 DRAWN BY Brian Baker
 DESIGNED BY Alvin R. Sutton III, P.E.
 APPROVED BY *[Signature]*
 DATE 1-30-23

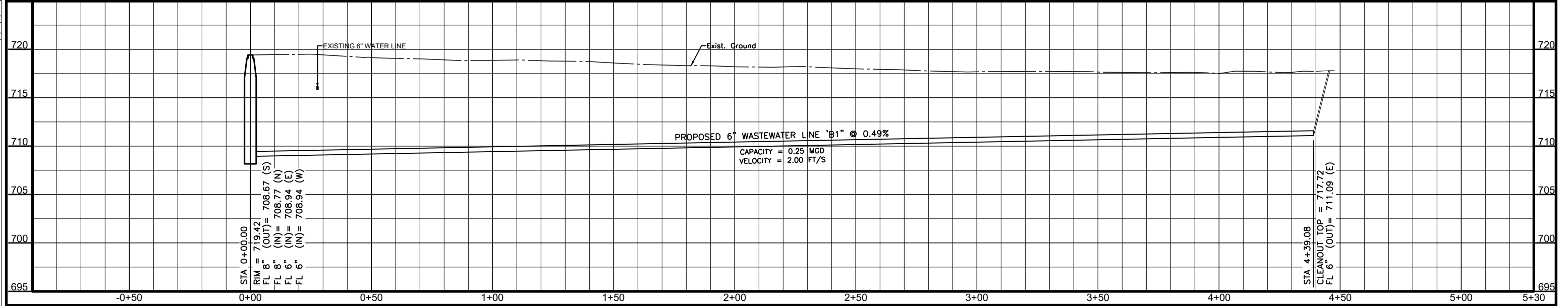
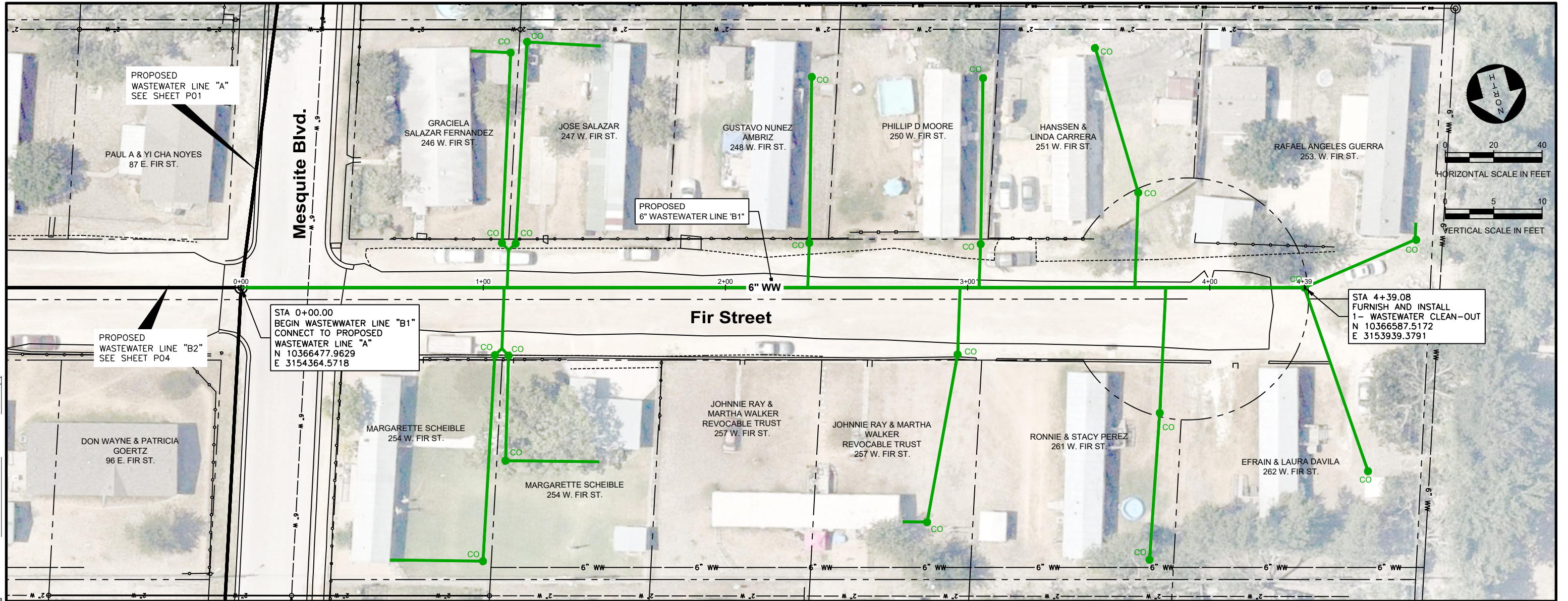


KASBERG, PATRICK & ASSOCIATES, LP
 CONSULTING ENGINEERS
 TEMPLE, TEXAS 76501

CITY OF NOLANVILLE, TEXAS
 THE PLAZA WASTEWATER IMPROVEMENTS, PHASE III
 PLAN AND PROFILE
 WASTEWATER LINE A - STA. 5+50 TO END

SHEET NO. **P02** OF **10** SHEETS

FILE: P:\nolanville\2022\22-114 The Plaza WW Rehab - PH III\CAD\BASE\WFG - WW LINE B1 - (5) - (4).dwg LAST SAVED: 1/30/2023 4:07:57 PM LAYOUT: Sheet - (7)



| NO. | DATE | REVISION | BY |
|-----|------|----------|----|
| | | | |

© 2023 Kasberg, Patrick & Associates, LP
KPA Firm Registration Number F-510

PROJECT NO. 2022-114
 DRAWN BY Brian Baker
 DESIGNED BY Alvin R. Sutton III, P.E.
 APPROVED BY *[Signature]*
 DATE 1-30-23

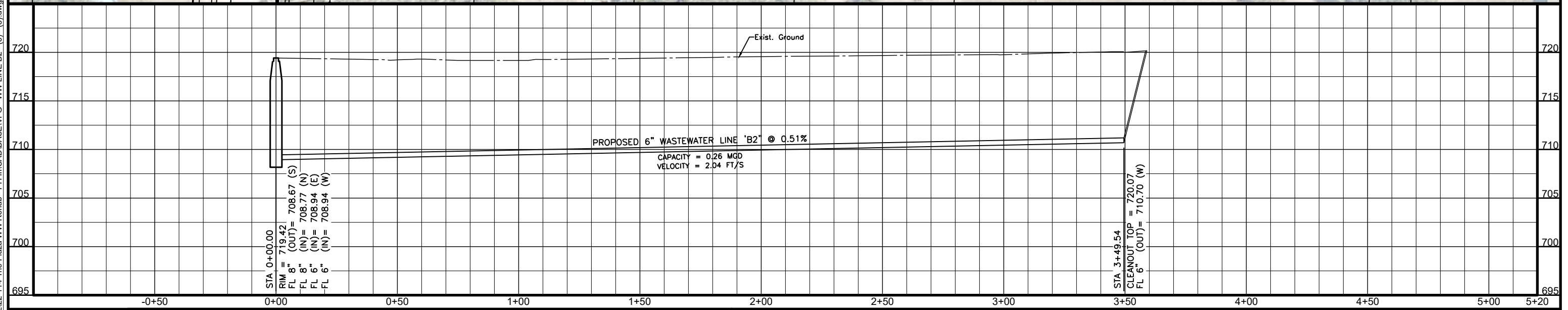
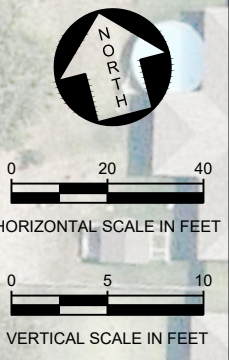
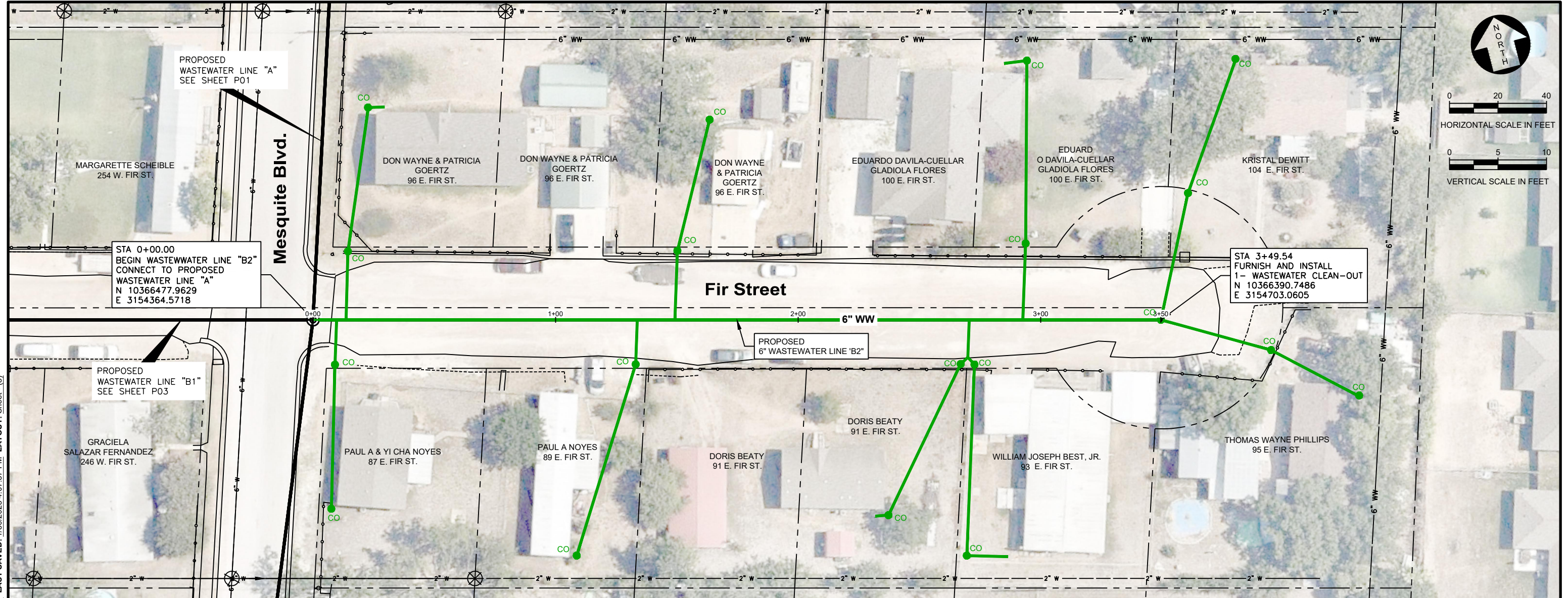


KPA
 KASBERG, PATRICK & ASSOCIATES, LP
 CONSULTING ENGINEERS
 TEMPLE, TEXAS 76501

CITY OF NOLANVILLE, TEXAS
 THE PLAZA WASTEWATER IMPROVEMENTS, PHASE III
 PLAN AND PROFILE
 WASTEWATER LINE B1

SHEET NO.
P03 OF
10 SHEETS

FILE: P:\nolanville\2022\22-114 The Plaza WW Rehab - PH III\CAD\BASE\VF - WW LINE B2 - (6) - (5).dwg LAST SAVED: 1/30/2023 4:07:37 PM LAYOUT: Sheet - (8)



| NO. | DATE | REVISION | BY |
|-----|------|----------|----|
| | | | |

©2023 Kasberg, Patrick & Associates, LP
KPA Firm Registration Number F-510

PROJECT NO. 2022-114
 DRAWN BY Brian Baker
 DESIGNED BY Alvin R. Sutton III, P.E.
 APPROVED BY *[Signature]*
 DATE 1-30-23

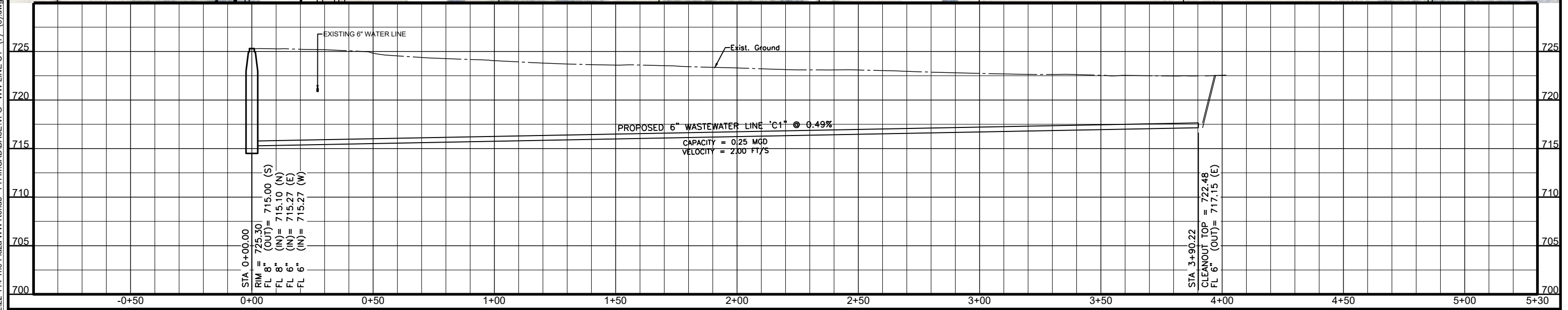
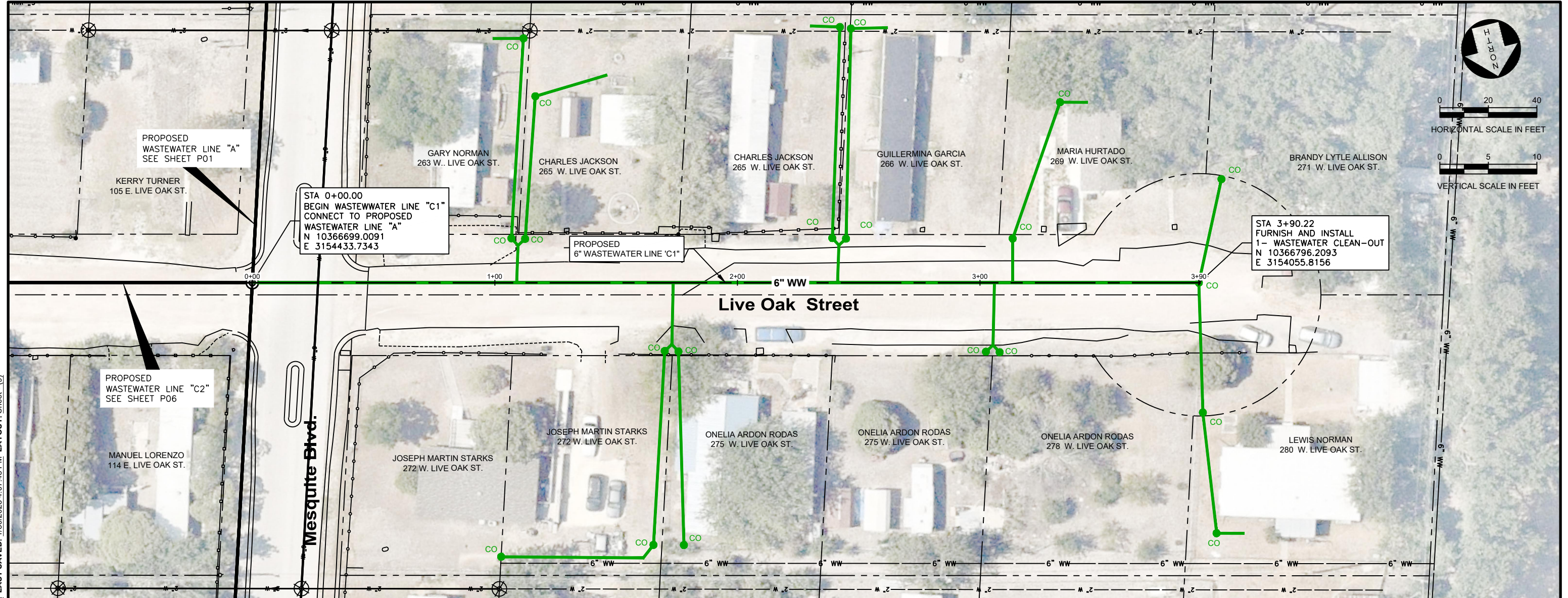


KPA
 KASBERG, PATRICK & ASSOCIATES, LP
 CONSULTING ENGINEERS
 TEMPLE, TEXAS 76501

CITY OF NOLANVILLE, TEXAS
 THE PLAZA WASTEWATER IMPROVEMENTS, PHASE III
 PLAN AND PROFILE
 WASTEWATER LINE B2

SHEET NO.
P04 OF
10 SHEETS

FILE: P:\nolanville\2022\22-114 The Plaza WW Rehab - PH III\CAD\BASE\VFG - WW LINE C1 - (7) - (6).dwg LAST SAVED: 1/30/2023 4:07:43 PM LAYOUT: Sheet - (9)



| NO. | DATE | REVISION | BY |
|-----|------|----------|----|
| | | | |

PROJECT NO. 2022-114
 DRAWN BY Brian Baker
 DESIGNED BY Alvin R. Sutton III, P.E.
 APPROVED BY *[Signature]*
 DATE 1-30-23

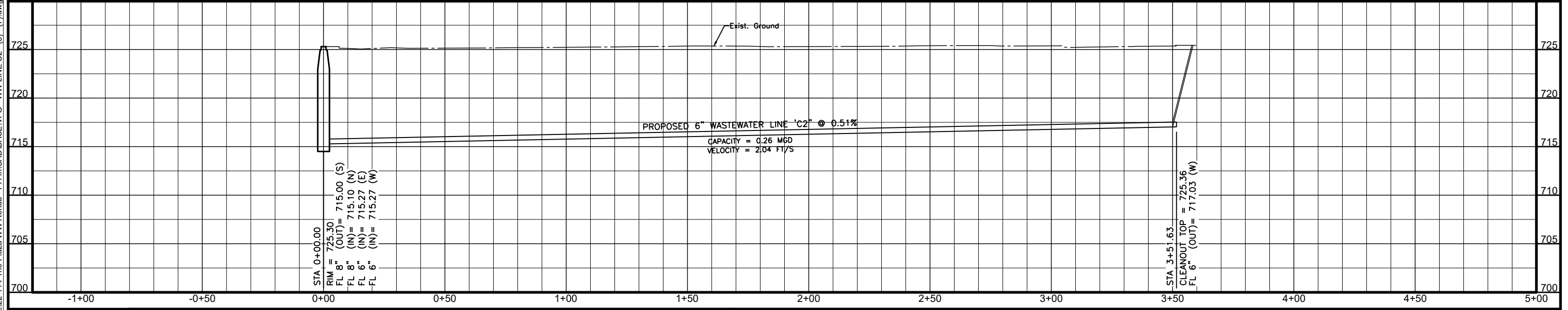
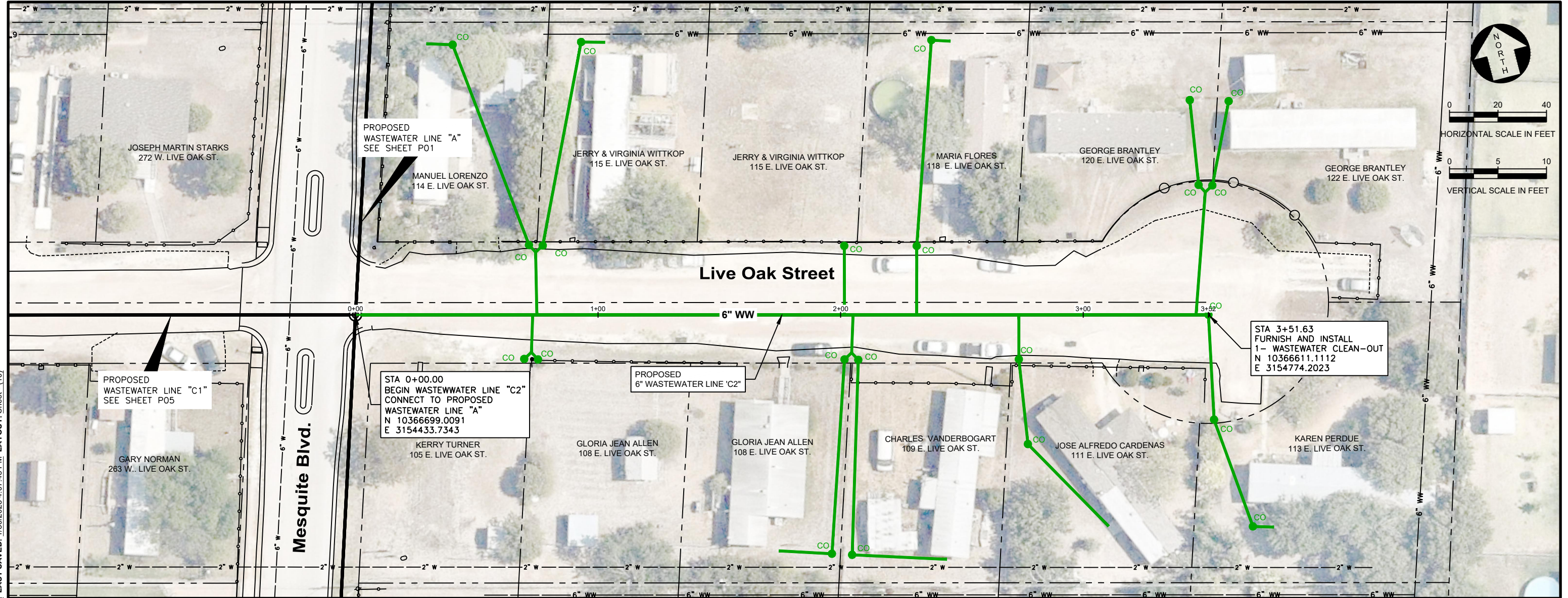


KASBERG, PATRICK & ASSOCIATES, LP
 CONSULTING ENGINEERS
 TEMPLE, TEXAS 76501

CITY OF NOLANVILLE, TEXAS
 THE PLAZA WASTEWATER IMPROVEMENTS, PHASE III
 PLAN AND PROFILE
 WASTEWATER LINE C1

SHEET NO.
P05 OF
10 SHEETS

FILE: P:\nolanville\202212-114 The Plaza WW Rehab - PH III\CAD\BASE\VFG - WW LINE C2 - (8) - (7).dwg LAST SAVED: 1/30/2023 4:07:45 PM LAYOUT: Sheet - (10)



| NO. | DATE | REVISION | BY |
|-----|------|----------|----|
| | | | |

© 2023 Kasberg, Patrick & Associates, LP
KPA Firm Registration Number F-510

| | |
|-------------|---------------------------|
| PROJECT NO. | 2022-114 |
| DRAWN BY | Brian Baker |
| DESIGNED BY | Alvin R. Sutton III, P.E. |
| APPROVED BY | <i>[Signature]</i> |
| DATE | 1-30-23 |

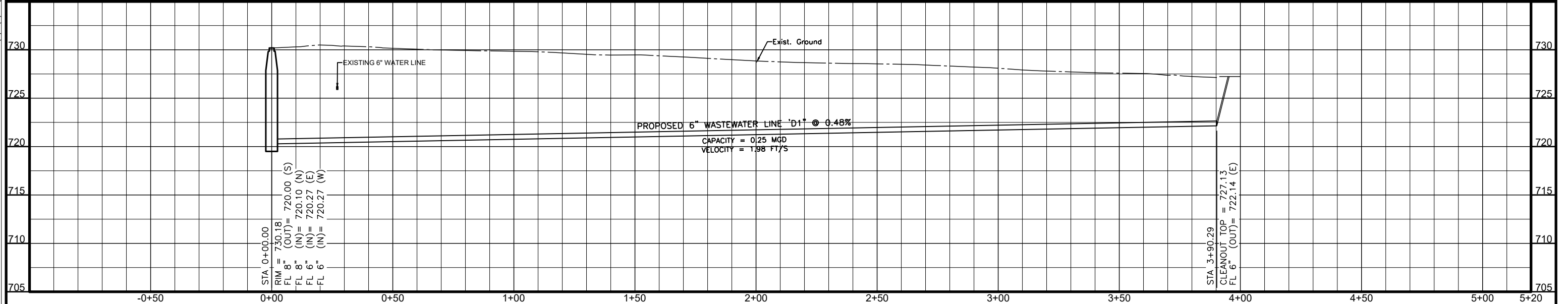
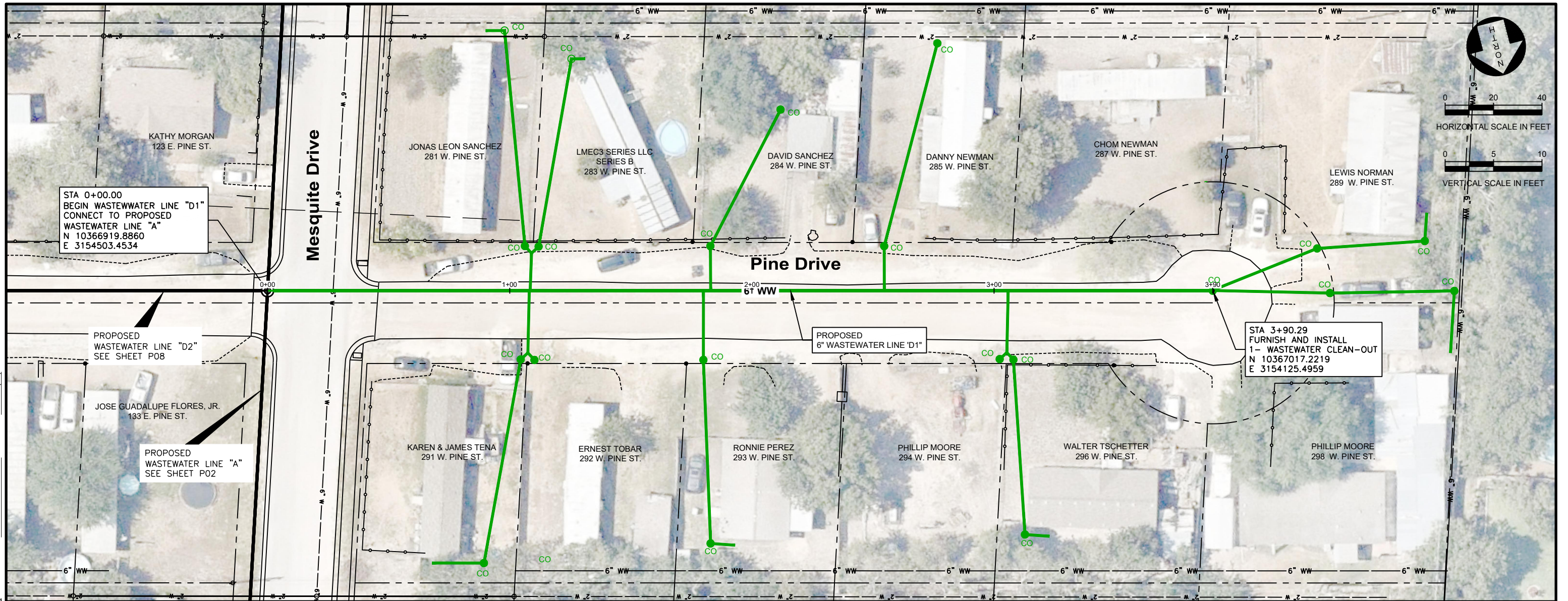


KASBERG, PATRICK & ASSOCIATES, LP
CONSULTING ENGINEERS
TEMPLE, TEXAS 76501

CITY OF NOLANVILLE, TEXAS
THE PLAZA WASTEWATER IMPROVEMENTS, PHASE III
PLAN AND PROFILE
WASTEWATER LINE C2

SHEET NO.
P06 OF
10 SHEETS

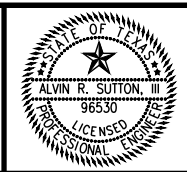
FILE: P:\nolanville\2022\22-114 The Plaza WW Rehab - PH III\CAD\BASE\VFG - WW LINE D1 - (9) - (8).dwg LAST SAVED: 1/30/2023 4:07:48 PM LAYOUT: Sheet - (11)



| NO. | DATE | REVISION | BY |
|-----|------|----------|----|
| | | | |

© 2023 Kasberg, Patrick & Associates, LP
KPA Firm Registration Number F-510

| | |
|-------------|---------------------------|
| PROJECT NO. | 2022-114 |
| DRAWN BY | Brian Baker |
| DESIGNED BY | Alvin R. Sutton III, P.E. |
| APPROVED BY | <i>[Signature]</i> |
| DATE | 1-30-23 |

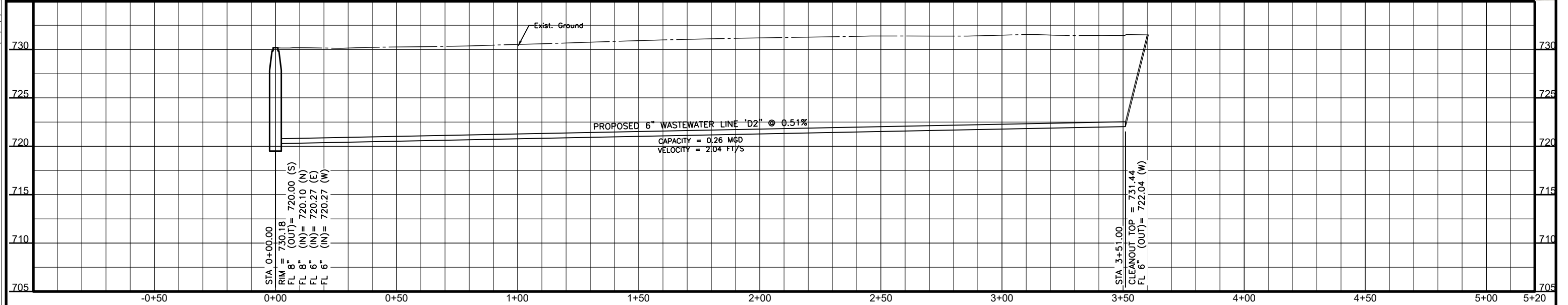
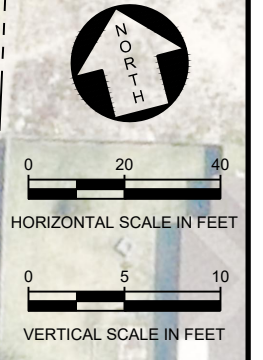
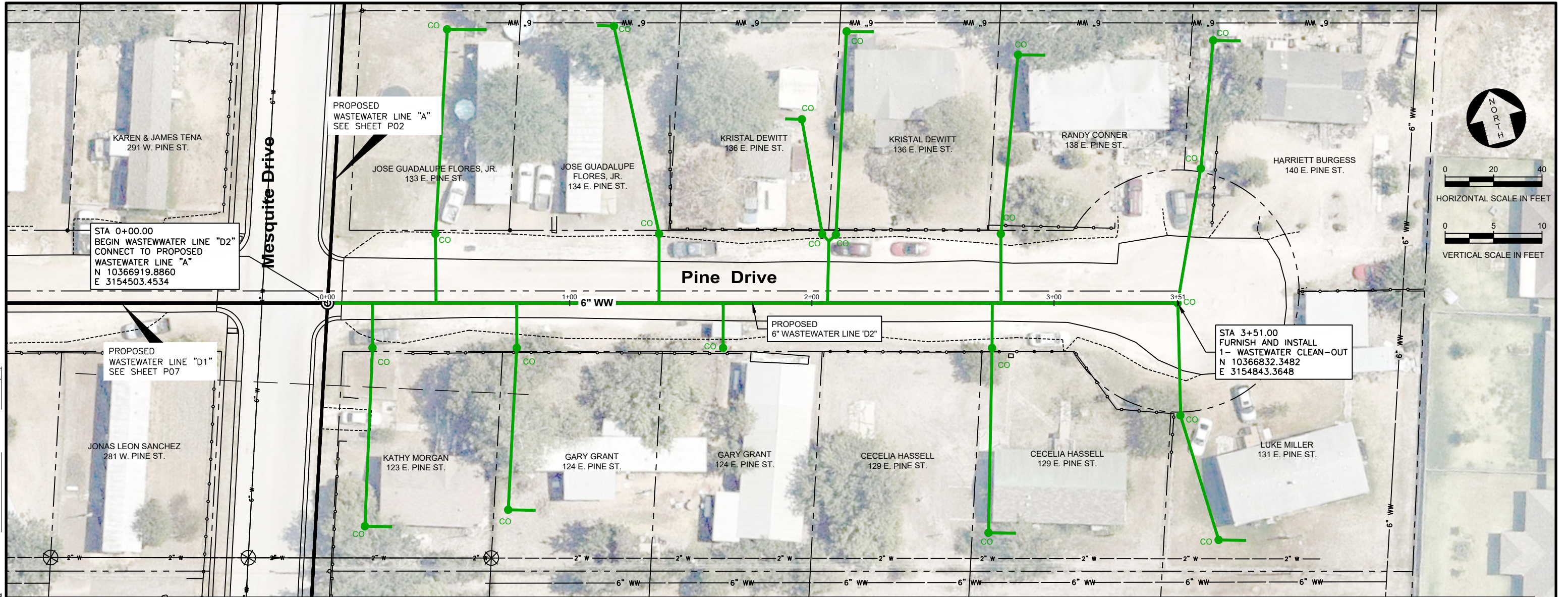


KASBERG, PATRICK & ASSOCIATES, LP
CONSULTING ENGINEERS
TEMPLE, TEXAS 76501

CITY OF NOLANVILLE, TEXAS
THE PLAZA WASTEWATER IMPROVEMENTS, PHASE III
PLAN AND PROFILE
WASTEWATER LINE D1

SHEET NO.
P07 OF
10 SHEETS

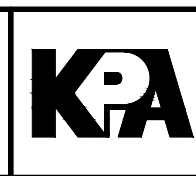
FILE: P:\nolanville\2022\22-114 The Plaza WW Rehab - PH III\CAD\BASE\VF.G - WW LINE D2 - (10) - (9).dwg LAST SAVED: 1/30/2023 4:07:50 PM LAYOUT: Sheet - (12)



| NO. | DATE | REVISION | BY |
|-----|------|----------|----|
| | | | |

© 2023 Kasberg, Patrick & Associates, LP
KPA Firm Registration Number F-510

| | |
|-------------|---------------------------|
| PROJECT NO. | 2022-114 |
| DRAWN BY | Brian Baker |
| DESIGNED BY | Alvin R. Sutton III, P.E. |
| APPROVED BY | <i>[Signature]</i> |
| DATE | 1-30-23 |

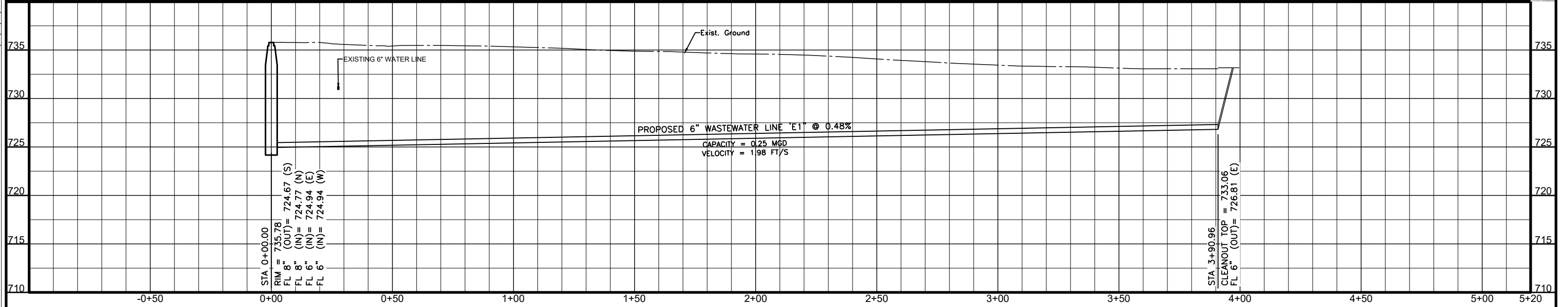
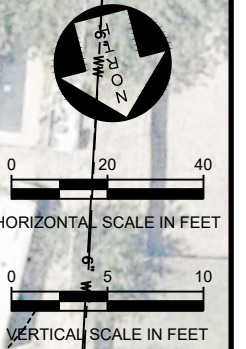
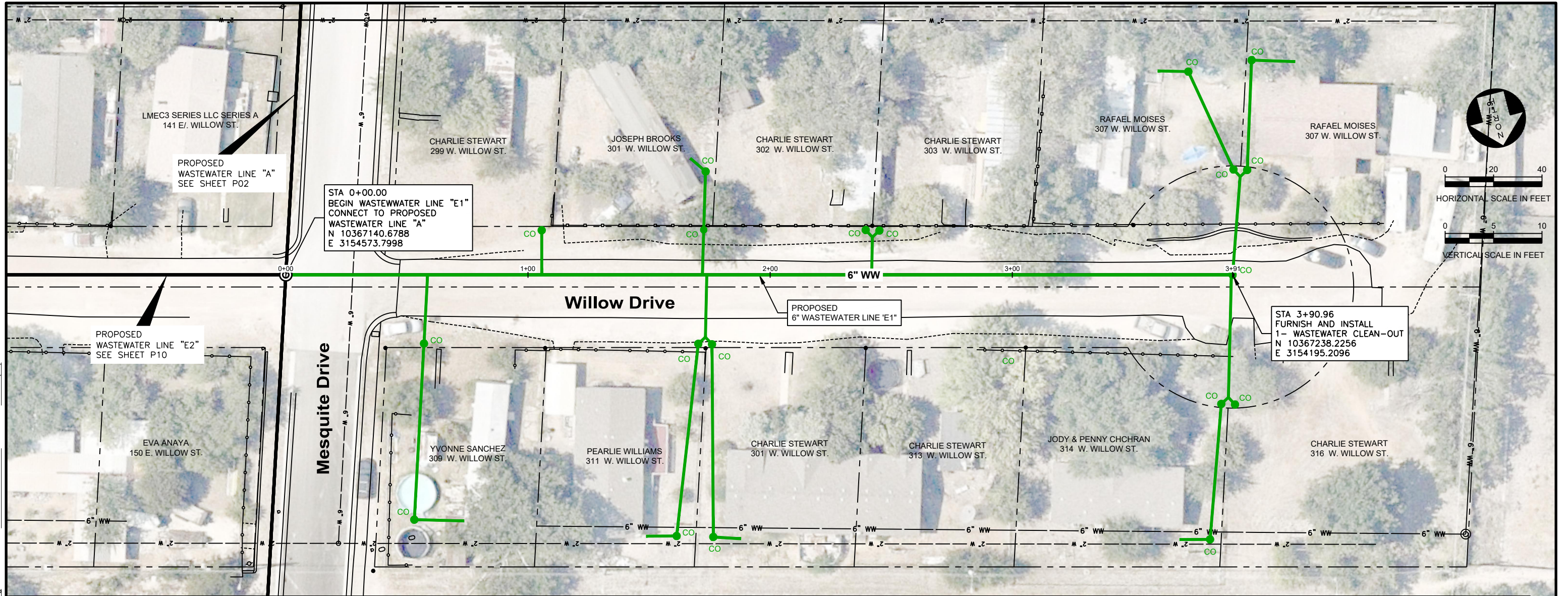


KASBERG, PATRICK & ASSOCIATES, LP
CONSULTING ENGINEERS
TEMPLE, TEXAS 76501

CITY OF NOLANVILLE, TEXAS
THE PLAZA WASTEWATER IMPROVEMENTS, PHASE III
PLAN AND PROFILE
WASTEWATER LINE D2

SHEET NO.
P08 OF
10 SHEETS

FILE: P:\nolanville\2022\22-114 The Plaza WW Rehab - PH III\CAD\BASE\VFG - WW LINE E1 - (11) - (11).dwg LAST SAVED: 1/30/2023 4:07:52 PM LAYOUT: Sheet - (15)



| NO. | DATE | REVISION | BY |
|-----|------|----------|----|
| | | | |

PROJECT NO. 2022-114
 DRAWN BY Brian Baker
 DESIGNED BY Alvin R. Sutton III, P.E.
 APPROVED BY *[Signature]*
 DATE 1-30-23

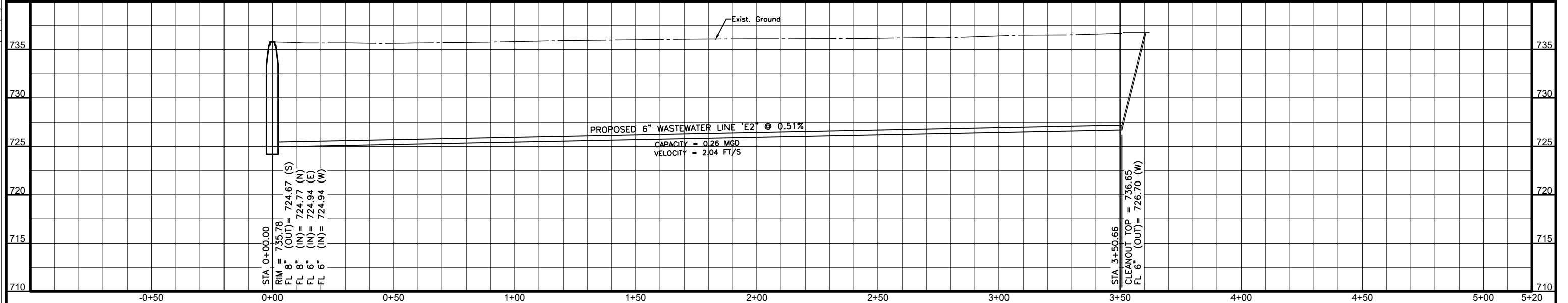
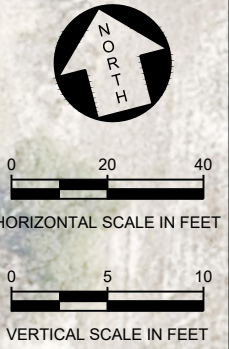
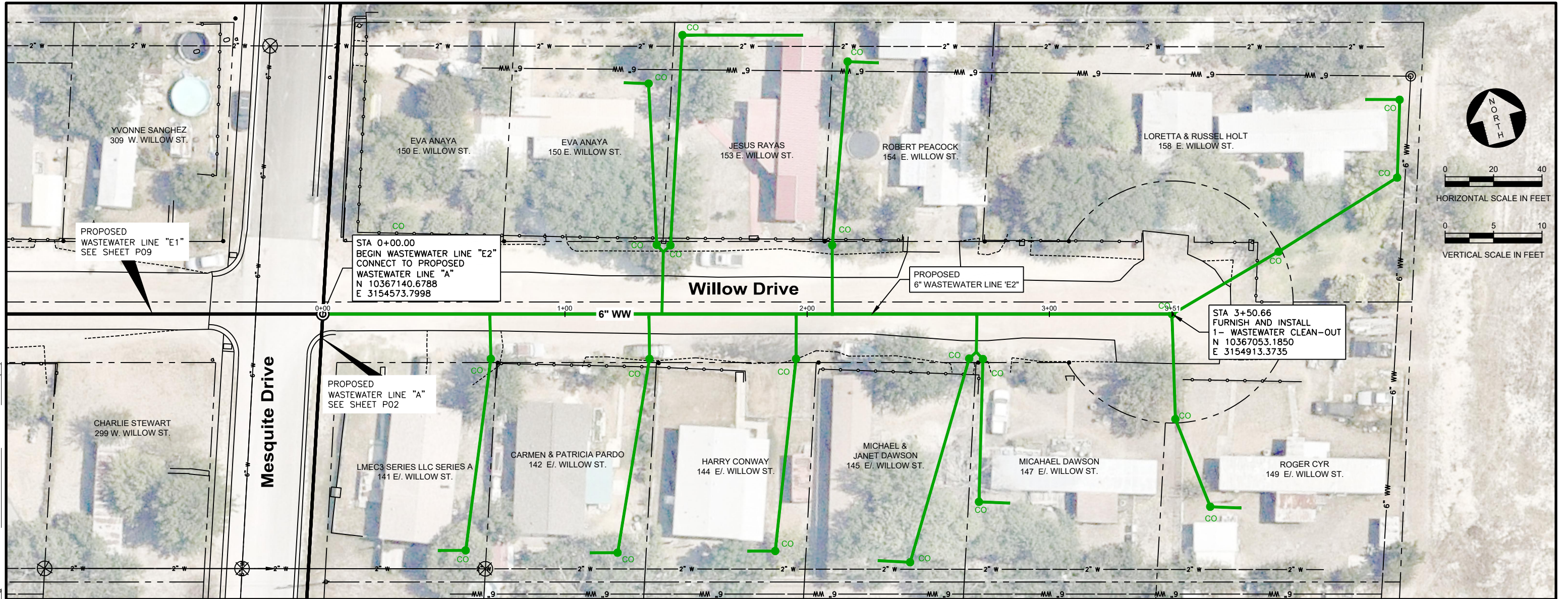


KPA
 KASBERG, PATRICK & ASSOCIATES, LP
 CONSULTING ENGINEERS
 TEMPLE, TEXAS 76501

CITY OF NOLANVILLE, TEXAS
 THE PLAZA WASTEWATER IMPROVEMENTS, PHASE III
 PLAN AND PROFILE
 WASTEWATER LINE E1

SHEET NO.
P09 OF
10 SHEETS

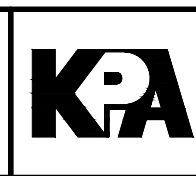
FILE: P:\nolanville\2022\22-114 The Plaza WW Rehab - PH III\CAD\BASE\VEG - WW LINE E2 - (12) - (12).dwg LAST SAVED: 1/30/2023 4:07:55 PM LAYOUT: Sheet - (16)



| NO. | DATE | REVISION | BY |
|-----|------|----------|----|
| | | | |

©2023 Kasberg, Patrick & Associates, LP
KPA Firm Registration Number F-510

PROJECT NO. 2022-114
 DRAWN BY Brian Baker
 DESIGNED BY Alvin R. Sutton III, P.E.
 APPROVED BY *[Signature]*
 DATE 1-30-23



KASBERG, PATRICK & ASSOCIATES, LP
 CONSULTING ENGINEERS
 TEMPLE, TEXAS 76501

CITY OF NOLANVILLE, TEXAS
 THE PLAZA WASTEWATER IMPROVEMENTS, PHASE III
 PLAN AND PROFILE
 WASTEWATER LINE E2

SHEET NO.
P10 OF
10 SHEETS